

# TV

*Nuova*  
**RONCARATI** srl

**STAMPAGGIO  
TERMOPLASTICI  
TERMOINDURENTI GOMMA  
GOMMA SILICONICA**



**PRODUCIAMMO ARTICOLI  
TECNICI A DISEGNO  
NEI SEGUENTI MATERIALI:**

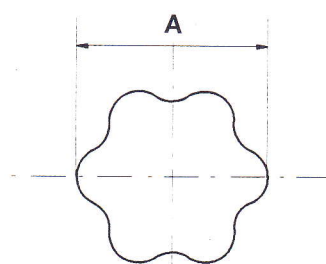
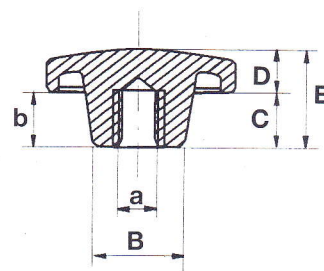
- **TERMOPLASTICI**
- **TERMOINDURENTI**
- **GOMMA SILICONICA**
- **GOMMA SILICONICA MEDICALE  
(STAMPATA IN CAMERA BIANCA)**
- **GOMMA**



**POMELLO A 6 LOBI**  
con inserto in ottone filettato

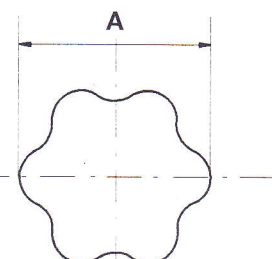
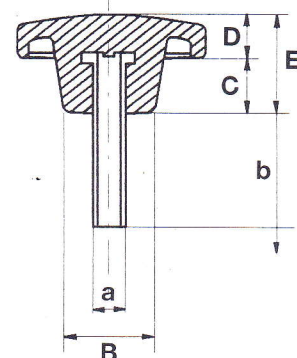
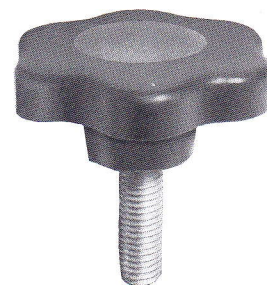
TIPO TYPE	A	B	C	D	E	a	b
200 A/1	20	12	10	7	18	M 5	11
200 A/2						M 6	
200 A/3	27	15	11	9	22	M 5	13
200 A/4						M 6	
200 A/5	33	18	12	9	23	M 6	15
200 A/6						M 8	
* 200 A/7	39	18	12	9	24	M 6	15
* 200 A/8						M 8	
200 A/9	45	18	13	10	27	M 6	11
200 A/10						M 8	
200 A/10-10						M 10	
200 A/11	55	25	15	12	29	M 8	18
200 A/12						M 10	
* 200 A/13	62	26	20	13	31	M 10	18
* 200 A/14						M 12	
* 200 A/15	69	26	20	13	31	M 12	20
* 200 A/16						M 14	
* 200 A/17	79	30	24	14	31	M 12	20
* 200 A/18						M 14	

\* N.B. A RICHIESTA, SONO DISPONIBILI CON FORO PASSANTE



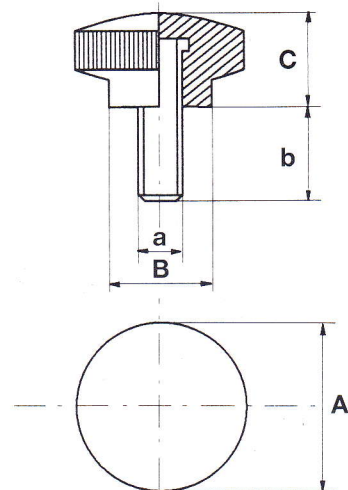
**POMELLO A 6 LOBI**  
con perno filettato

TIPO TYPE	A	B	C	D	E	a	b
200 B/1	20	12	10	7	18	M 5	15
200 B/2						M 6	
200 B/3	27	15	11	9	22	M 5	20
200 B/4						M 6	
200 B/5	33	18	12	9	23	M 6	20
200 B/6						M 8	
200 B/7	39	18	12	9	24	M 6	25
200 B/8						M 8	
200 B/9	45	18	13	10	27	M 6	25
200 B/10						M 8	
200 B/11	55	25	15	12	29	M 8	35
200 B/12						M 10	
200 B/13	62	26	20	13	31	M 10	35
200 B/14						M 12	
200 B/15	69	26	20	13	31	M 12	35
200 B/16						M 14	
200 B/17	79	30	24	14	31	M 12	35
200 B/18						M 14	



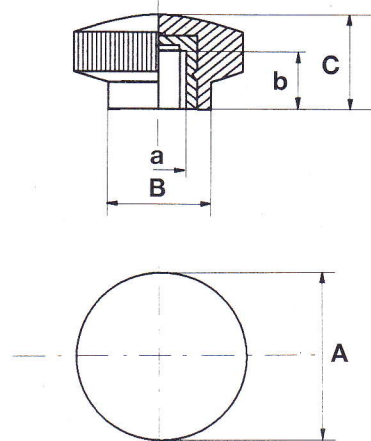
## POMELLO ZIGRINATO con perno filettato

TIPO TYPE	A	B	C	a	b
200 M/1				M 5	
200 M/2	24	13	16	M 6	15
200 M/3				M 6	
200 M/4	33	20	20	M 8	20



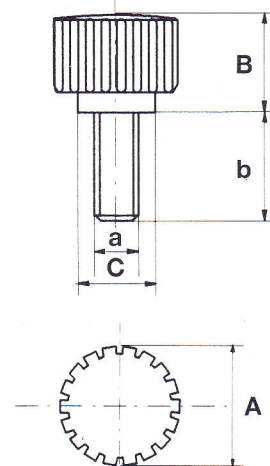
## POMELLO ZIGRINATO con inserto in ottone filettato

TIPO TYPE	A	B	C	a	b
200 L/1				M 5	
200 L/2	24	13	16	M 6	12
200 L/3				M 8	
200 L/4				M 6	
200 L/5	33	20	20	M 8	14
200 L/6				M 10	



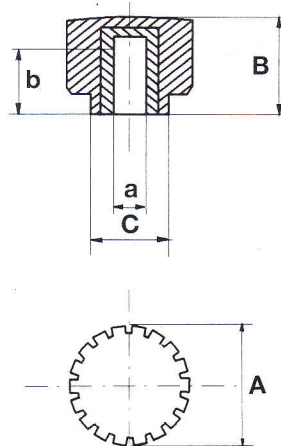
## POMELLO con perno filettato

TIPO TYPE	A	B	C	a	b
200 C/1				M 4	
200 C/2	15	11	10	M 5	10
200 C/3				M 5	
200 C/4	18	18	12	M 6	13
200 C/5				M 6	
200 C/6	24	18	16	M 8	15



## POMELLO con inserto in ottone filettato

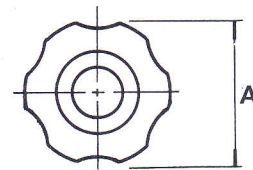
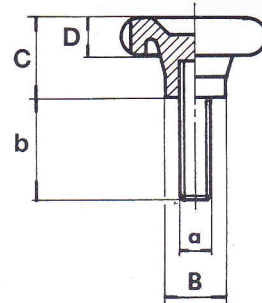
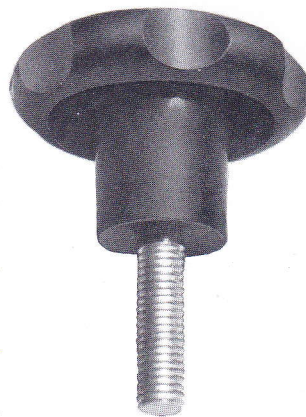
TIPO TYPE	A	B	C	a	b
200 E/1				M 4	
200 E/2	15	10	10	M 5	10
200 E/3				M 6	
200 E/4				M 5	
200 E/5	18	16	12	M 6	10
200 E/6				M 6	
200 E/7	24	17	16	M 8	10





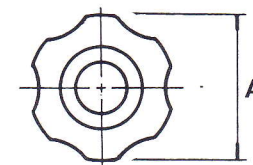
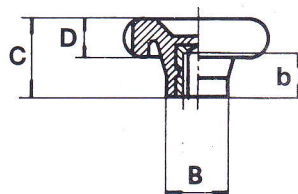
**POMELLO A 6 LOBI**  
con perno filettato

TIPO TYPE	A	B	C	D	a	b
200 G/1	52	22	23	13	M 8	30
200 G/2					M 10	40
200 G/3	70	28	42	18	M 10	40
200 G/4					M 12	45
200 G/5					M 14	50
200 G/6	90	38	50	22	M 16	20
200 G/7					M 18	30



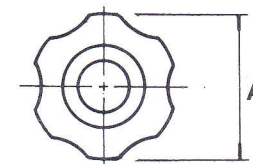
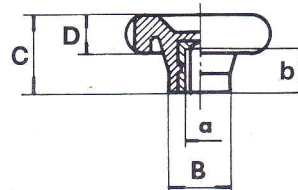
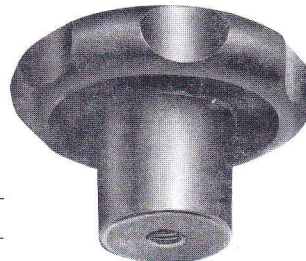
**POMELLO A 6 LOBI**  
con mozzo in acciaio cieco

TIPO TYPE	A	B	C	D	b
200 F/1	52	22	33	13	25
200 F/2	70	28	42	18	20
200 F/3	90	38	50	22	20



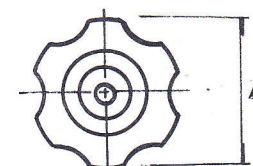
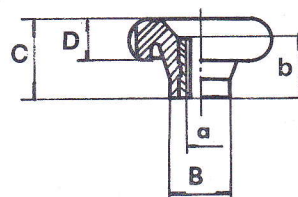
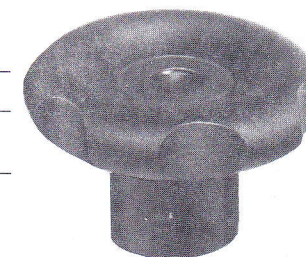
**POMELLO A 6 LOBI**  
con inserto in ottone filettato

TIPO TYPE	A	B	C	D	a	b
200 H/1	52	22	33	13	M 8	20
200 H/2					M 10	
200 H/3	70	28	42	18	M 10	25
200 H/4					M 12	
200 H/5					M 14	
200 H/6	90	38	50	22	M 16	20
200 H/7					M 18	



**POMELLO A 6 LOBI**  
con inserto in ottone filettato passante

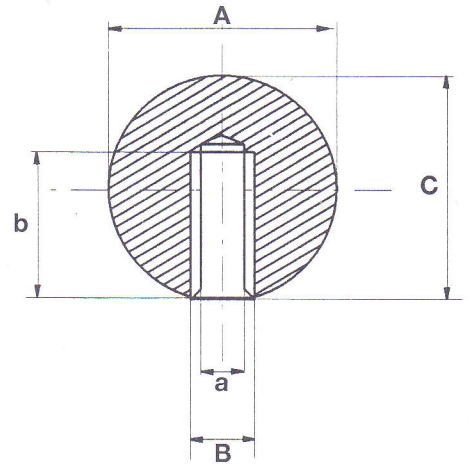
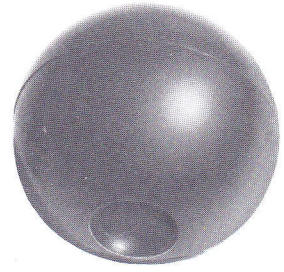
TIPO TYPE	A	B	C	D	a	b
200 P/1	52	22	35	13	M 8	18
200 P/2					M 10	





**SFERA**  
con foro filettato

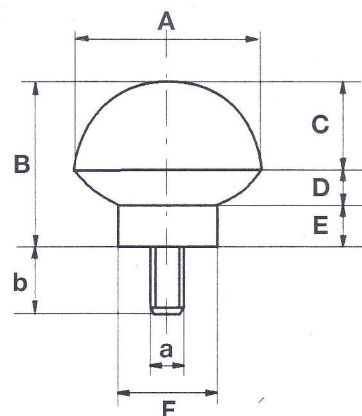
TIPO TYPE	A	B	C	a	b
100 A/3 100 A/4	20	10	20	M 5 M 6	12
100 A/5 100 A/6	25	10	25	M 6 M 8	15
100 A/7 100 A/8	30	12	30	M 8 M 10	15
100 A/9 100 A/10	35	15	35	M 8 M 10	17
100 A/11 100 A/12	40	15	40	M 10 M 12	20
100 A/13 100 A/14	45	15	45	M 10 M 12	25
100 A/15 100 A/16	50	17	50	M 10 M 12	27
100 A/17 100 A/18	60	17	60	M 10 M 12	27





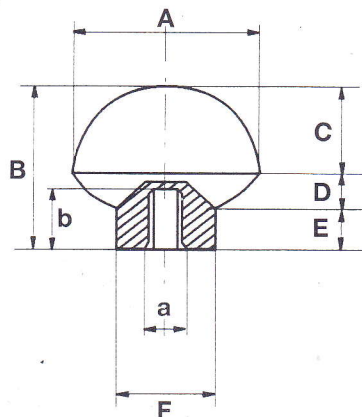
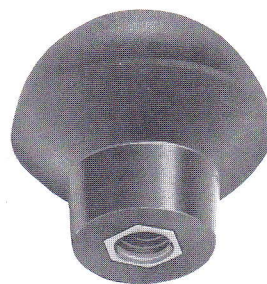
## IMPUGNATURA SEMISFERICA con perno filettato

TIPO TYPE	A	B	C	D	E	F	a	b
900 S/1							M 8	
900 S/2	44	45	24	8	13	25	M 10	10



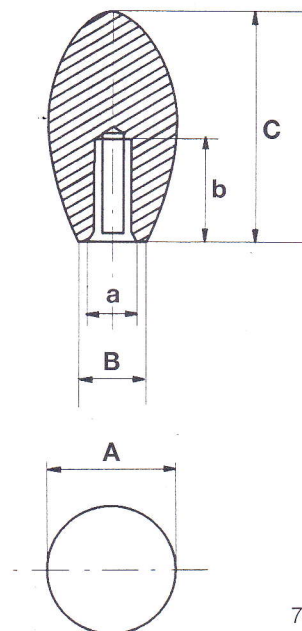
## IMPUGNATURA SEMISFERICA con inserto in ottone filettato

TIPO	A	B	C	D	E	F	a	b
800 S/1							M 8	15
800 S/2	44	45	24	8	13	25	M 10	15
800 S/3							M 12	15



## IMPUGNATURA OVALE con foro filettato

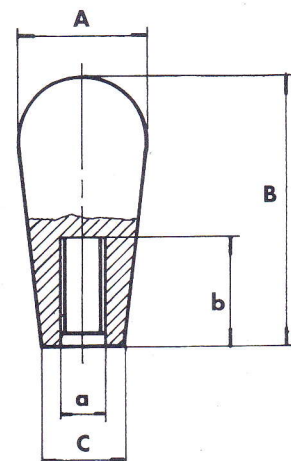
TIPO	A	B	C	a	b
100 B/1				M 6	
100 B/2	27	14	40	M 8	20
100 B/3				M 10	
100 B/4				M 8	
100 B/5	34	19	54	M 10	20
100 B/6				M 12	





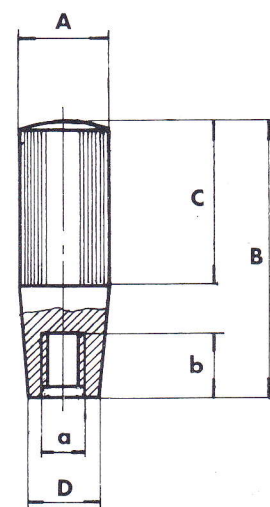
## IMPUGNATURA CONICA con foro filettato

TIPO	A	B	C	a	b
700 C/1				M 6	
700 C/2	25	54	17	M 8	33
700 C/3				M 10	
700 C/4				M 8	
700 C/5	34	72	22	M 10	30
700 C/6				M 12	



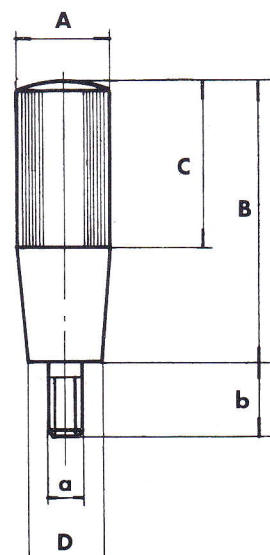
## MANICO ZIGRINATO con foro filettato

TIPO	A	B	C	D	a	b
500 M/1					M 8	
500 M/2	27	87	52	21	M 10	30
500 M/3					M 12	



## MANICO ZIGRINATO con perno filettato

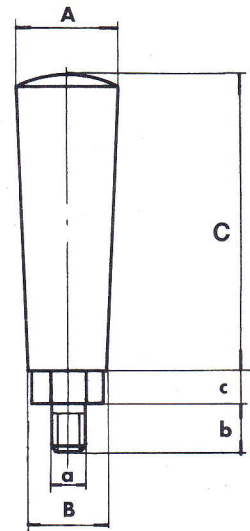
TIPO	A	B	C	D	a	b
600 M/1					M 8	
600 M/2	27	87	52	21	M 10	15





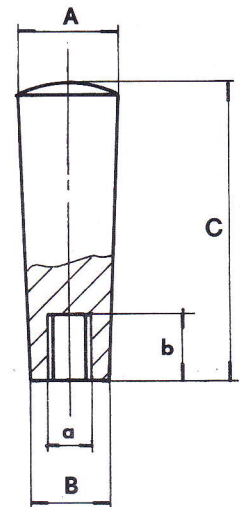
## MANICO CONICO con perno girevole

TIPO	A	B	C	a	b	c
300 B/1 300 B/2	28	22	80	M 8 M 10	15	8
300 B/3 300 B/4	28	22	95	M 8 M 10	15	8



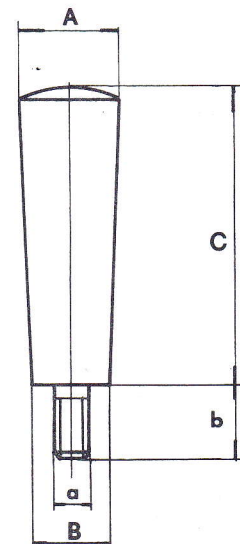
## MANICO CONICO con foro filettato

TIPO	A	B	C	a	b
300/1 300/2	28	22	80	M 8 M 10	20
300/3 300/4	28	22	95	M 8 M 10	20



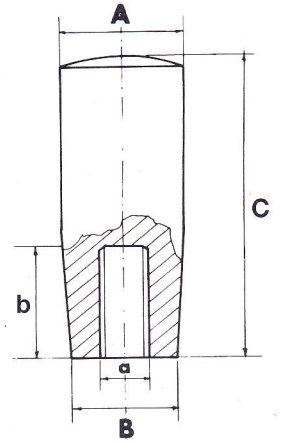
## MANICO CONICO con perno filettato

TIPO	A	B	C	a	b
300 C/1 300 C/2	28	22	80	M 8 M 10	15
300 C/3 300 C/4	28	22	95	M 8 M 10	15



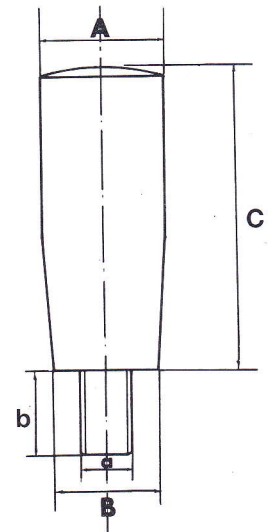
**MANICO**  
con foro filettato

TIPO	A	B	C	a	b
400 E/1	20	16	37	M 5	20
400 E/2				M 6	
400 E/3				M 8	
400 E/4	22	18	53	M 6	20
400 E/5				M 8	
400 E/6				M 10	



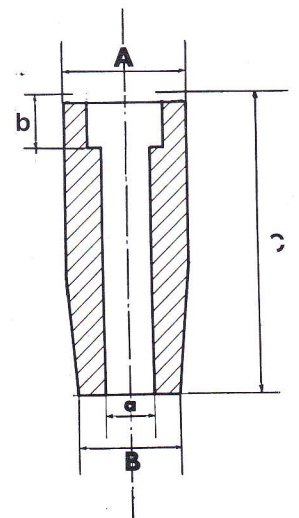
**MANICO**  
con perno filettato

TIPO	A	B	C	a	b
400 C/1	20	16	37	M 5	15
400 C/2				M 6	
400 C/3				M 8	
400 C/4	22	18	53	M 6	15
400 C/5				M 8	
400 C/6				M 10	



**MANICO**  
con foro passante e sede testa a brugola

TIPO	A	B	C	a	b
400 B/1	20	16	37	Ø 6	7
400 B/2	22	18	53	Ø 8	9

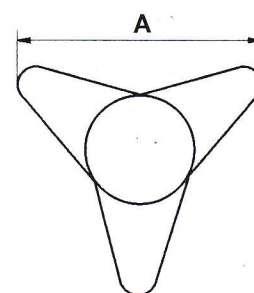
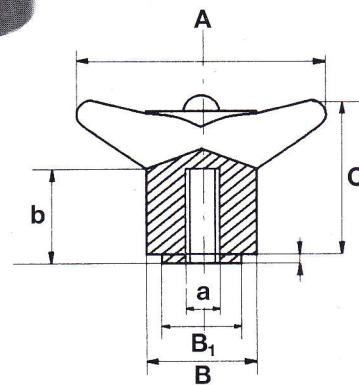
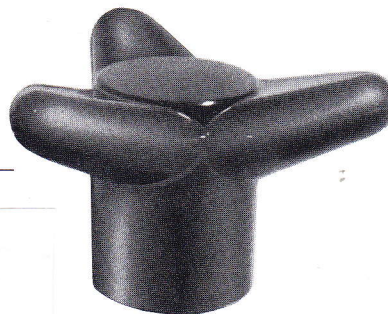




**POMELLO A 3 PUNTE**  
con inserto in ottone filettato

TIPO	A	B <sub>1</sub>	B.	C	a	b
------	---	----------------	----	---	---	---

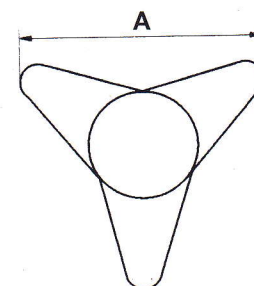
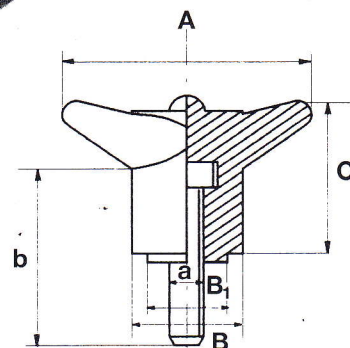
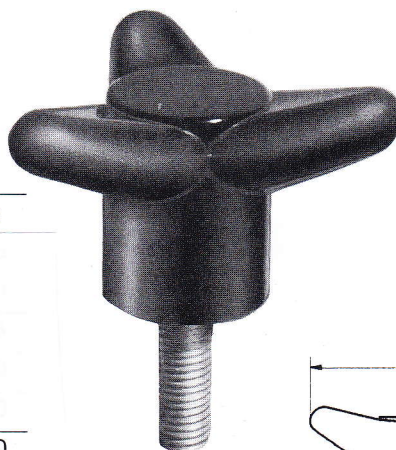
300 S/7	68	24	30	43,5	M 8	23
300 S/8	68	24	30	43,5	M 10	23
300 S/9	68	24	30	43,5	M 12	23



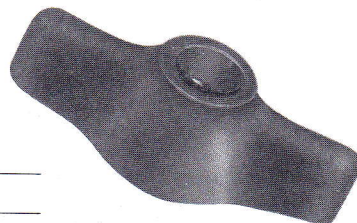
**POMELLO A 3 PUNTE**  
con perno filettato

TIPO	A	B <sub>1</sub>	B.	C	a	b	c
------	---	----------------	----	---	---	---	---

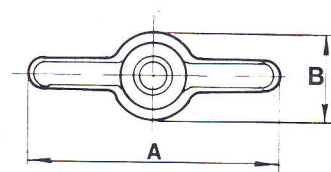
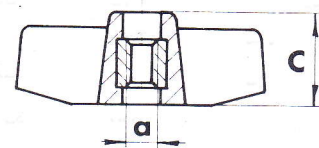
300 P/6	68	24	30	43,5	M 8	23	30
300 P/7	68	24	30	43,5	M 10	23	30
300 P/8	68	24	30	43,5	M 12	23	30



**GALLETTI DI FISSAGGIO**  
con boccola filettata passante



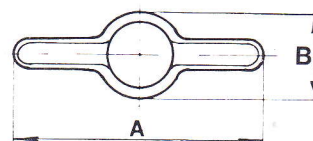
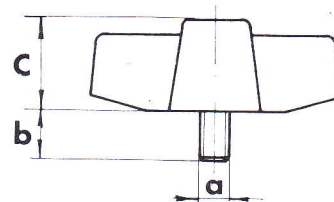
TIPO	A	B	C	a
300 G/2	48	19	16,5	M 6
300 G/3				M 8



**GALLETTI DI FISSAGGIO**  
con perno filettato



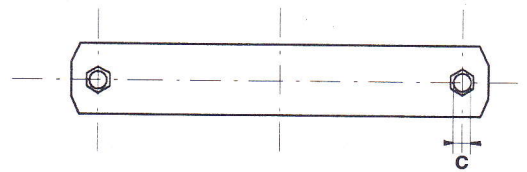
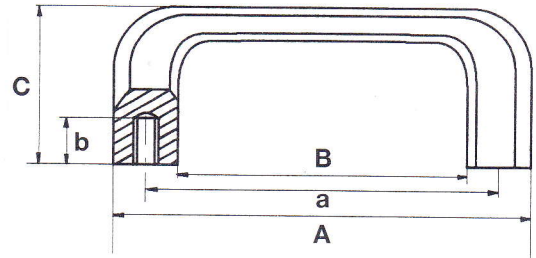
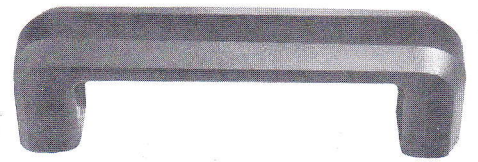
TIPO	A	B	C	a	b
300 GP/1				M 6	15
300 GP/2	48	19	16,5	M 8	10
300 GP/3				M 8	20





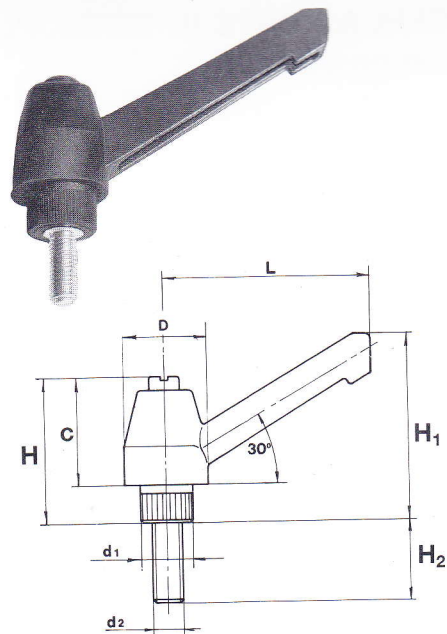
# MANIGLIA A PONTE con inserto in ottone filettato

TIPO	A	B	C	b	a
200 T/3	140	98	40	M 6	120
200 T/4	140	98	40	M 8	120
200 T/5	140	98	40	M 10	120



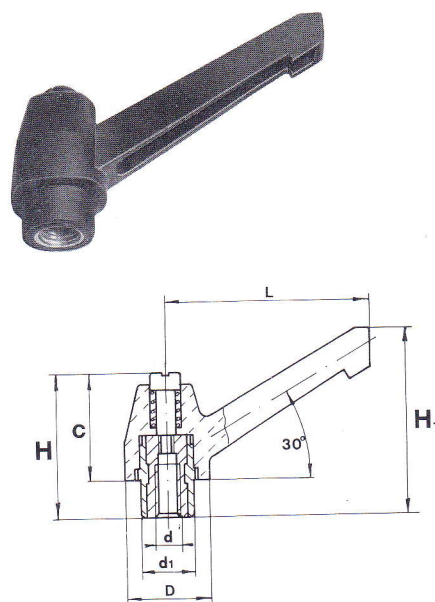
## MANIGLIA A SCATTO con perno filettato

TIPO	L	H	C	H <sub>1</sub>	D	d <sub>1</sub>	d	H <sub>2</sub>
500 MP/1	40	29	22	40	16	11	M 4	20
500 MP/2							M 5	
500 MP/3							M 6	
500 MP/4	55	36	27	51	20	14	M 4	20
500 MP/5							M 5	
500 MP/6							M 6	
500 MP/7							M 8	
500 MP/8	79	48	37	67	28	20	M 8	20
500 MP/9							M 10	
500 MP/10							M 12	
500 MP/11	100	60	48	85	33	25	M 12	20
500 MP/12							M 14	
500 MP/13							M 16	



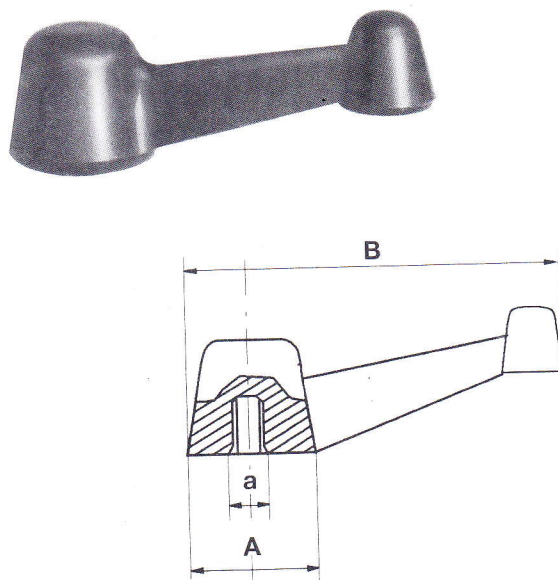
## MANIGLIA A SCATTO con inserto filettato in acciaio

TIPO	L	H	C	H <sub>1</sub>	D	d <sub>1</sub>	d
500 MR/1	40	29	22	40	16	11	M 4
500 MR/2							M 5
500 MR/3							M 6
500 MR/4	55	36	27	51	20	14	M 4
500 MR/5							M 5
500 MR/6							M 6
500 MR/7							M 8
500 MR/8	79	48	37	67	28	20	M 8
500 MR/9							M 10
500 MR/10							M 12
500 MR/11	100	60	48	85	33	25	M 12
500 MR/12							M 14
500 MR/13							M 16



## MANIGLIA con inserto in ottone filettato

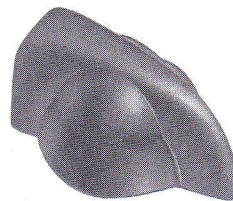
TIPO	A	B	a
200 R/1	25	70	M 8
200 R/2	25	70	M 10



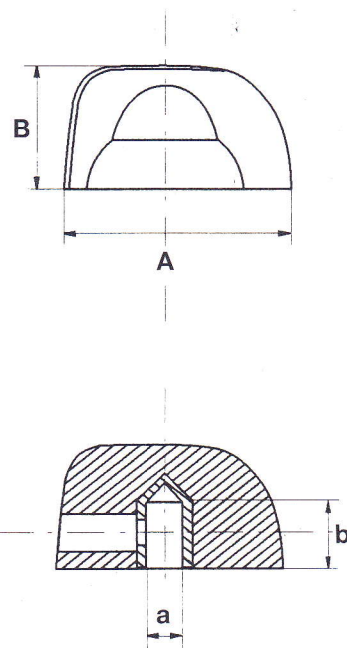


**POMELLO AD INDICE**  
con inserto a foro liscio

TIPO	A	B	a	b
300 D/1	32	19	Ø 6	15



A RICHIESTA, SONO DISPONIBILI CON FORI DIVERSI

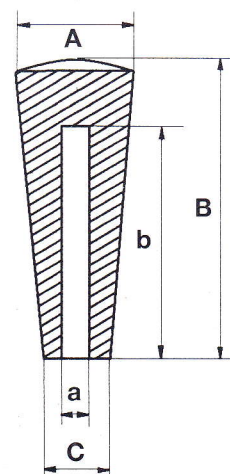


**MANICO IN TERMOPLASTICO**  
con foro liscio

TIPO	A	B	C	a	b
300 A/1	22	55	17	Ø 8	50
300 A/2	22	55	17	Ø10	50

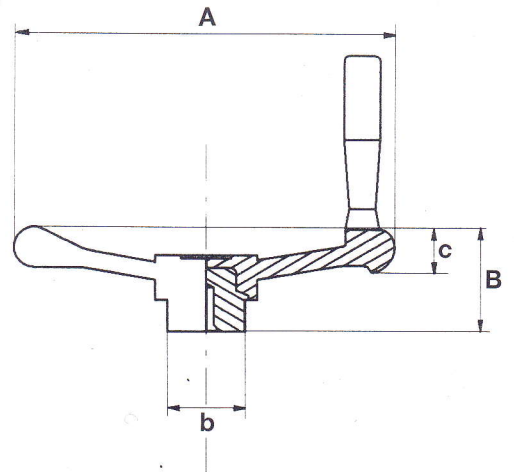
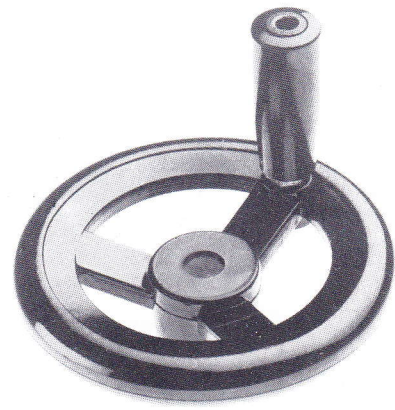


A RICHIESTA, PERSONALIZZATE E CON FORO A CROCE



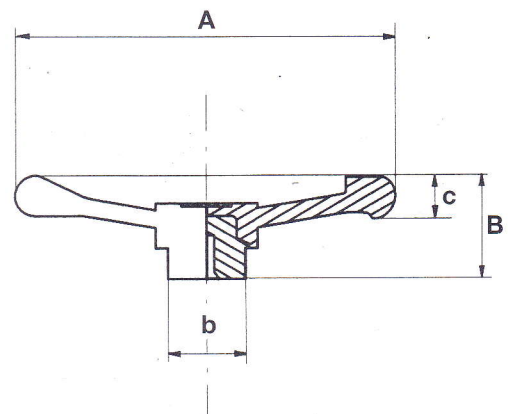
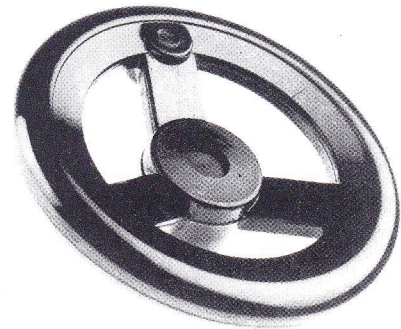
**VOLANTINO A TRE RAZZE**  
con mozzo in acciaio e maniglia

TIPO	A	B	a	b	c
400 AM/1	90	32	37	25	16
400 AM/2	120	40	53	28	18
400 AM/3	160	45	53	38	20



**VOLANTINO A TRE RAZZE**  
con mozzo in acciaio

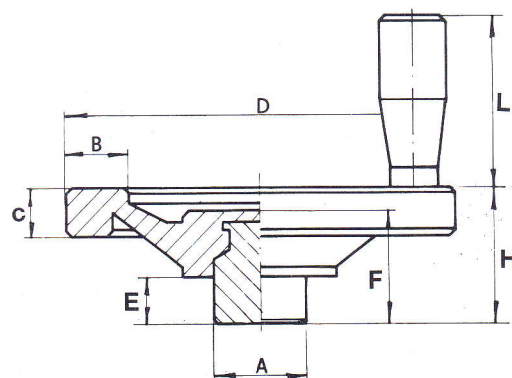
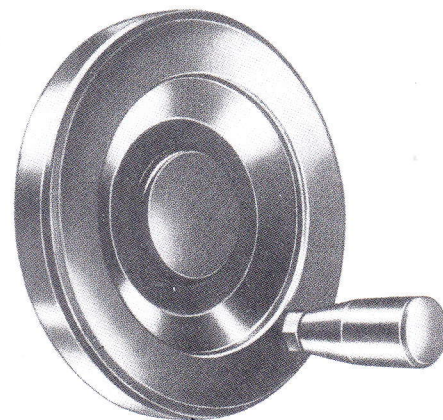
TIPO	A	B	b	c
400 A/1	90	32	25	16
400 A/2	120	40	28	18
400 A/3	160	45	38	20





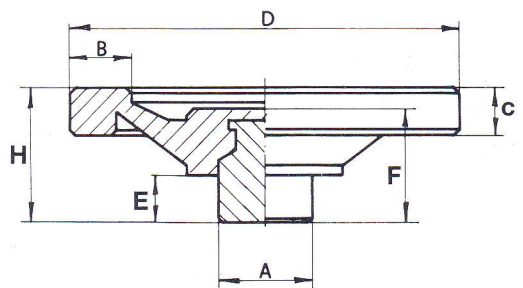
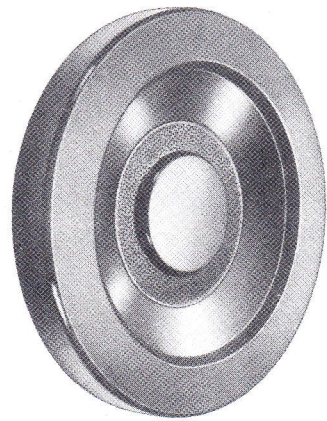
**VOLANTINO PIENO  
con maniglia**

TIPO	D	H	A	E	B	C	F	L
400 PM/1	100	34	24	12	16	12	29	45
400 PM/2	125	38	25	13	19	15	31	61
400 PM/3	150	48	31	15	21	18	38	71
400 PM/4	200	55	40	15	27	20	44	92
400 PM/5	250	64	49	15	31	24	46	92



## VOLANTINO PIENO

TIPO	D	H	A	E	B	C	F
400 P/1	100	34	24	12	16	12	29
400 P/2	125	38	25	13	19	15	31
400 P/3	150	48	31	15	21	18	38



## VOLANTINO PIENO con mozzo e maniglia ribaltabile

TIPO	D	H	L <sub>1</sub>	L	F	A	E	B	C
400 PMR/1	125	38	60	109	31	26	13	19	15
400 PMR/2	150	48	70	128	38	31	15	22	18

